

BACKGROUND...

Stable flies have become an ever-increasing menace in Perth's outer metropolitan shires for the last 15 years.

WHO ARE WE?

SFAG was established and incorporated in 2005 as a result of the increasing impact of stable flies (*Stomoxys calcitrans*) on residents and livestock in the Shire of Gingin. SFAG builds on the work of a dedicated group in the Shire of Gingin during the 1990s which led to the creation of the government appointed Stable Fly Management Steering Group and the restriction of the use of raw poultry manure to four months of the year. SFAG's primary objective is ...

To develop strategies to eliminate the stable fly problem.

WHAT SFAG HAS ACHIEVED TO DATE AND WHAT WE ARE DOING NOW

LOBBYING

Due to lobbying by SFAG :

- ◆ The above mentioned government appointed Stable Fly Management Steering Group has been reactivated
- ◆ Raw Poultry Manure can now only be used for horticulture during three months of the year – June, July and August
- ◆ A total ban on the use of Raw Poultry Manure in Shires covered by the Health (Poultry Manure) Regulations will come into force in 2011.
- ◆ Numerous letters, including copies of SFAG's publicity folder, have been sent to Members of Parliament of all persuasions, to publicise the problem at a political level, and asking for their support in Parliament for legislation to combat the effects of stable flies

PUBLICITY OF THE STABLE FLY PROBLEM

- ◆ Production of a publicity folder to draw attention to the impacts of stable flies on the community
- ◆ Presentations to Shire Councils
- ◆ Displays at Gingin Expo, Bullsbrook Fair and the Chittering Expo
- ◆ Media releases

COLLABORATION

- ◆ Support has been obtained from local government, particularly the Shires of Gingin and Dandaragan, and good working relationships developed
- ◆ Working collaboratively with Vegetables WA representatives to determine ways forward to combat stable fly infestation in raw manure and vegetable crop waste, including having constructive input into the section of the VWA Good Practice Guide entitled *Good Practice Management of Manures and Vegetable Crop Residue*
- ◆ Working collaboratively with the Shire of Gingin officers on reporting and monitoring stable fly outbreaks

BIOSECURITY & AGRICULTURAL MANAGEMENT (BAM) ACT 2007

- ◆ Lobbying the State Government to have the section of the VWA Good Practice Guide entitled *Good Practice Management of Manures and Vegetable Crop Residue* enshrined in the BAM Act legislation

RESEARCH & INFORMATION GATHERING

- ◆ Committee members have attended the Waste Management Boards public consultation workshop on Interim Standards for Organics Applied to Land and Draft Organic Strategy in order to have input into dealing with organic wastes
- ◆ The Group has carried out its own research into the composting industry, visiting sites and learning about this industry's endeavours, with a view to helping find solutions for horticulturalists, who will require alternatives to the use of raw poultry manure when it is banned in 2011.

APPLICATION FOR MEMBERSHIP

Please note :

Membership year runs from each September AGM to the next and for 2010/2011 costs \$15 per person. Membership is open to any person who accepts and supports the objectives and rules of the Stable Fly Action Group Inc.

Name _____

Postal Address _____

_____ Postcode _____

Phone _____

Fax _____

Email _____

Please post this form to

The Secretary

SFAG Inc

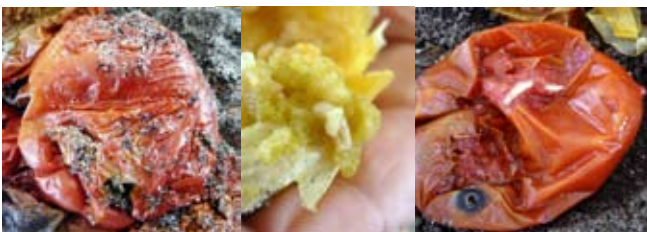
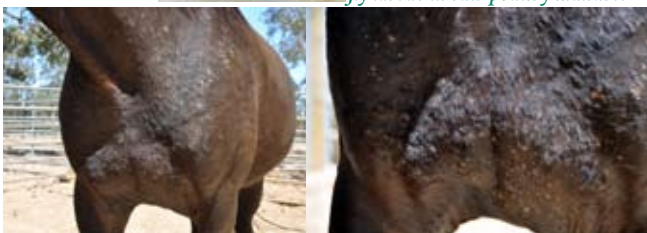
*PO Box 114, LANCELIN
6044*

Receipts are sent out with
THE SFAG RAG newsletter.

**THANK YOU
FOR
YOUR
SUPPORT**



Pictures top to bottom.
 Stable fly (left) House fly (right).
 Horse with severe allergy to stable fly bites. Dog with wound on ear from stable fly bites. Stable fly (and secondary blow fly strike) on a young lamb.
 Typical fly larvae (inc. stable fly in crop waste. Bottom right: Typical fly larvae in raw poultry manure.



Which shires are included in the ban?

City of Armadale, Town of Kwinana, City of Cockburn
 Shire of Chittering, City of Joondalup, Shire of Gingin,
 City of Rockingham, Shire of Harvey, City of Swan, Shire
 of Kalamunda, City of Wanneroo, Shire of Serpentine-
 Jarrahdale, Peel Harvey Coastal Plain Catchment.

What is a stable fly?

A stable fly is a blood sucking fly with a painful bite. They cause irritation to people and livestock alike. The fly has a sharp mouth part (proboscis) for piercing the skin and drawing blood. Stable flies can breed in animal and poultry manures and decaying vegetable matter.

What should I do if I have stable flies?

Report their presence to your local shire health officer.

Gingin - 9575 2211

Bullsbrook - 9267 9312

Where can I find out more about stable flies?

Agriculture Western Australia :

Flies and Manure 6/96

Stable Fly Farmnote 101/94

Best Horticulture Practices for Fly Breeding 11/96

Environmental Health Guide:

Stable Fly

www.stableflyactiongroup.org.au

When and where are SFAG committee meetings held?

Committee meetings are held on the fourth Tuesday of the month at 7.30 pm, usually at the Arts & Crafts Centre (formerly CWA Rooms), Constable Street, Gingin.

THE STABLE FLY ACTION GROUP INC. (SFAG)

INCORPORATED JULY 2005



OFFICE BEARERS AND COMMITTEE 2009/10

CHAIRMAN

Bob Wilson Ph/Fax 9655 1055

Email : chairman@stableflyactiongroup.org.au

SECRETARY/TREASURER

Jo Ottaway Ph 9655 3024

Fax 9655 3130

Email : secretary@stableflyactiongroup.org.au

PO Box 114, Lancelin, 6044

DEPUTY CHAIRMAN

Bill White Ph 9575 7543

Fax 9575 7708

COMMITTEE

Reg Beale Ph 9575 7572

Fax 9575 7502

Kate Goh Ph 9571 2039

Gary Harley Ph 9575 2286

Anne Sibbel Ph/Fax 9571 2080

Rod Withnell Ph 9575 2162

www.stableflyactiongroup.org.au